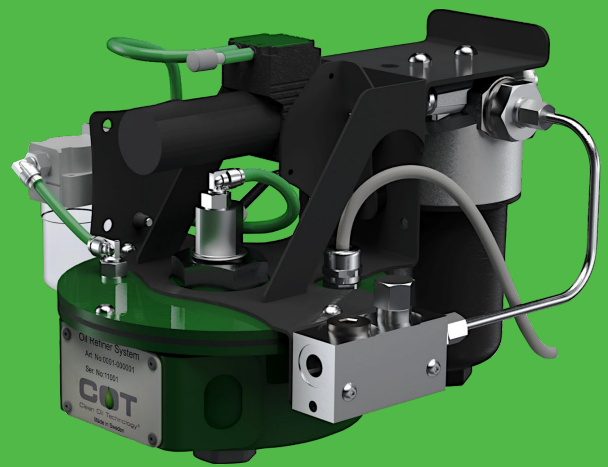


Cost effective - Flexible - Energy efficient

COT Oil Refiner System



COT2000



COT600

“So you can use the oil much, much longer.”

COT OIL REFINER



Continuous elimination of free and dissolved water in industrial oil

COT Oil Refiner System operates in regular operation as a permanent solution. It does not require maintenance which saves large sums on spare parts and service.

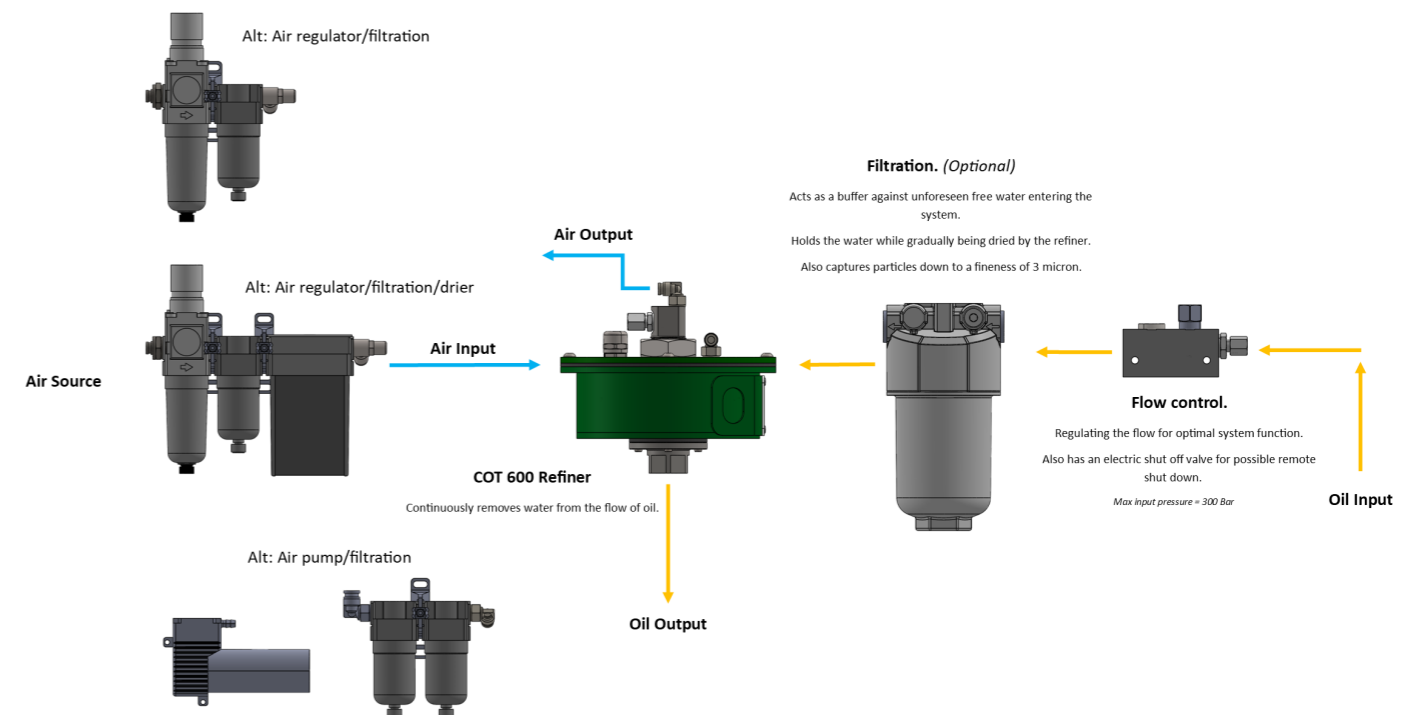
The system proactively removes free, emulsified and dissolved water from industrial oil and keeps the water content <100 ppm for mineral oils and <200 ppm for bio-oils — in continuous operation.

COT Oil Refiner System fits a wide range of av conditions and is specifically designed for applications in:

- humid environments
- limited space
- exposed to severe temperature changes

COT Oil Refiner System is an energy-efficient solution with high capacity.

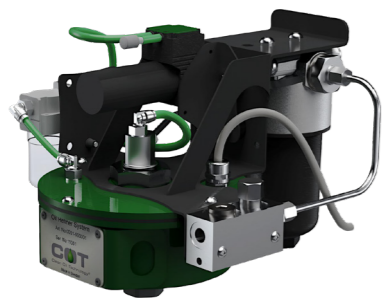
COT OIL REFINER SYSTEM



COT OIL REFINER

COT600

For system volume approx. 100 - 1000 liters.



COT600

Technical data – COT600 over 20 different configurations	
Weight	5-8 kg
Size	L: 319 mm B: 294 mm H: 217 mm
Volt	24 VDC/10A
Power consumption	50-100 W



COT2000

COT2000

For system volume approx. 2000 liters.

Technical data – COT2000	
Weight	45 kg
Size	L: 610 mm B: 470 mm H: 700 mm
Volt	110-230 AC/10A
Power consumption	100-600 W

CAPACITY

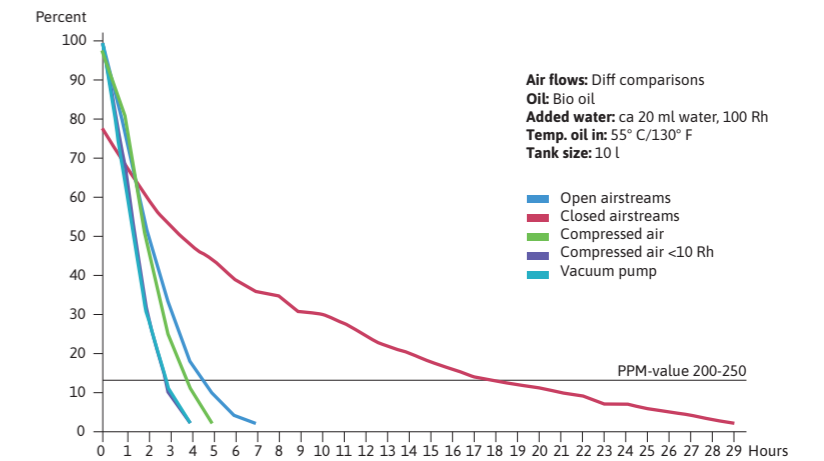
Reduction of water, relative humidity

(May vary for different types/viscosity of oil)

The amount of water the COT Oil Refiner System can remove depends on oil temperature, oil flow and access to dry air.

These parameters are calibrated at each individual installation.

A reference value for the system is removing approx. 5ml/h.

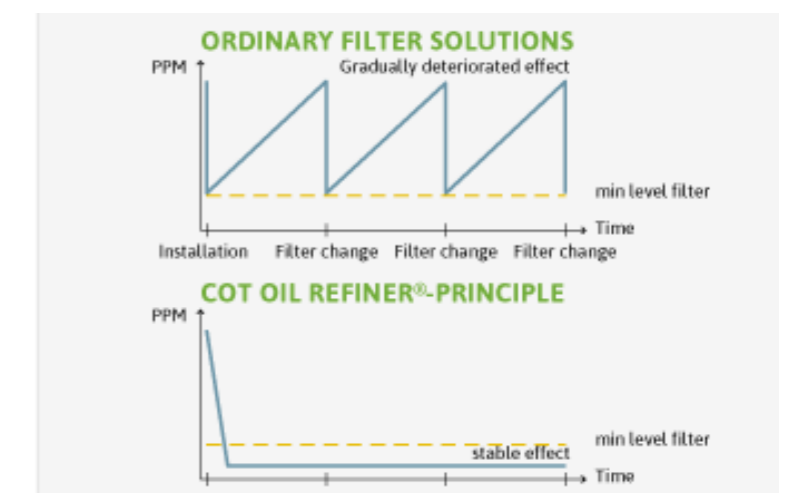


CONTINUOUSLY LOW PPM-LEVEL

The moisture level is kept very low due to COT Oil Refiner System's ability to also reduce dissolved water in the oil.

The difference between a cellulose filter and COT Oil Refiner System is illustrated in the diagram.

Cellulose filter compared to COT Oil Refiner



SUPPLEMENTARY COMPONENTS



Particle filter F060

Technical data - COT Filter F060	
Weight	0.9 kg
Size	190 x 95 mm
Particle capacity	20 g
Water capacity	60 ml
Micron/Beta	3/200



Particle filter F350

Technical data - COT Filter F350	
Weight	7 kg
Size	340 x 170 mm
Particle capacity	65 g
Water capacity	350 ml
Micron/Beta	3/200

SUPPLEMENTARY COMPONENTS



COT Preheater

Technical data - COT Preheater	
Weight	1.0 kg
Size	320 x 48 mm
Volt	24 VDC/10A
Energy consumption	50-100 W

COT Water absorbent/Particle filter

When there is a risk of sudden water penetration, it is possible to supplement with a water-buffering filter that also traps particles down to 3 μ .

The filter is successively dried by the COT Oil Refiner System, which means that there is no need for filter replacement.

COT Preheater

Can be installed at a constant operating oil temperature below 30° C.

